

Recombinant Rab11 Monoclonal Antibody

catalog number: **AN301312L**

Note: *Centrifuge before opening to ensure complete recovery of vial contents.*

Description

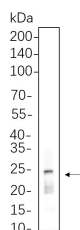
Reactivity	Human;Mouse;Rat
Immunogen	Recombinant Human Rab11 protein
Host	Rabbit
Isotype	IgG, κ
Clone	B1075
Purification	Protein A
Buffer	PBS, 50% glycerol, 0.05% Proclin 300, 0.05% protein protectant.

Applications

Recommended Dilution

IHC	1:1000-1:5000
WB	1:2000-1:10000
IF	1:200-1:1000
ELISA	1:5000-1:20000
IP	1:50-1:200

Data



Western Blot with Recombinant Rab11 Monoclonal Antibody at dilution of 1:1000 dilution. Lane A: A549 cell lysate.

Observed-MW:24 kDa

Calculated-MW:24 kDa

Preparation & Storage

Storage	Store at -20°C Valid for 12 months. Avoid freeze / thaw cycles.
Shipping	Ice bag

Background

The protein encoded by this gene belongs to the Rab family of the small GTPase superfamily. It is associated with both constitutive and regulated secretory pathways, and may be involved in protein transport. Two transcript variants encoding different isoforms have been found for this gene.

For Research Use Only